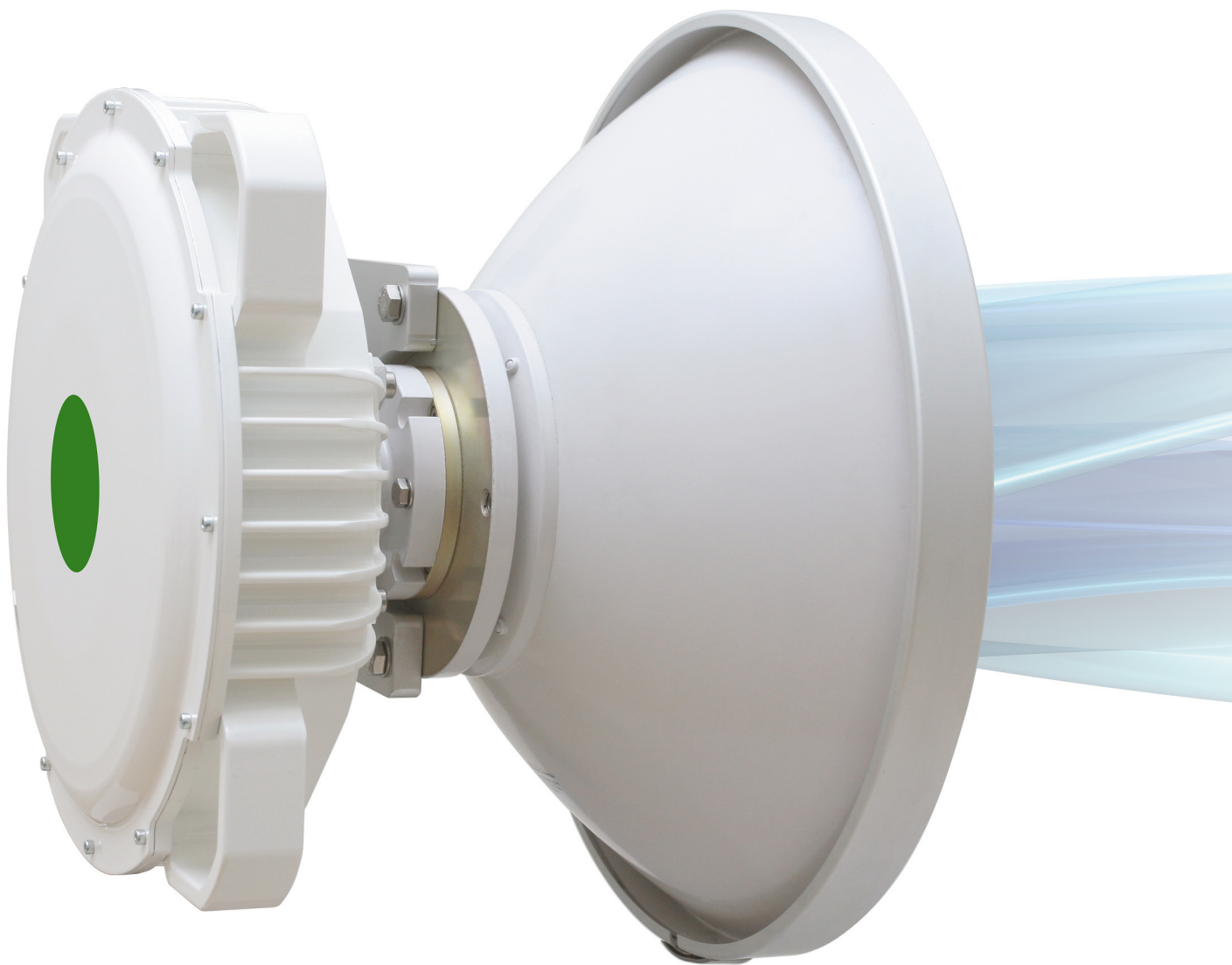




CFIP-106/108

Full-outdoor radio with 100Mbps
Fast Ethernet and four E1/T1



- Patented ODU mounting clamps for quick and easy installation
- Industry-leading reliability and durability in harsh environment
- Low power consumption for sites with alternative energy sources, like solar panels and wind turbines
- Ideal for last-mile access with narrow channel sizes over E1/T1 connectivity
- All-outdoor form factor, ideal for hybrid wireless network installations with Ethernet and E1/T1 connectivity



CFIP-106/108 is primarily designed for IP networks and provides Fast Ethernet interface with capacities from 8 Mbps up to 100 Mbps full duplex Fast Ethernet. In addition to that, CFIP-106/108 has a 4xE1/T1 port for legacy equipment connectivity and for use in hybrid TDM/IP networks.

Total payload capacity (Mbps)

Modulation	CFIP-108 FODU			CFIP-106 FODU		
	Channel bandwidths					
	7 MHz	14 MHz	28 MHz	10 MHz	20 MHz	30 MHz
4QAM	8.5	17.1	35.2	12.3	25	38.2
16QAM	17	34.5	69.4	24.7	50	75.2
32QAM	21.2	43.1	88.6-100	30.9	63.1	96-106
64QAM	28.2-30.8	57.1	100-108	40.8	83.2-93.6	-
128QAM	-	68.5-74.3	-	48.8-52.5	-	-

	CFIP 108	CFIP 106
Frequency Bands	6, 7, 8, 10, 11, 13, 15, 18, 23, 24 UL, 26, 38 GHz	6, 7, 11, 13, 15, 18, 23, 24 UL, 38 GHz
Channel Bandwidths	7/14/28 MHz	10/20/30 MHz
Modulation	4QAM, 16QAM, 32QAM, 64QAM, 128QAM	4QAM, 16QAM, 32QAM, 64QAM, 128QAM
Capacity	up to 108 Mbps	up to 106 Mbps
Ethernet	1xRJ-45 (electrical) , with PoE	
E1/T1	up to 4E1	up to 4T1
Service ports	BNC (RSSI), Twin-BNC (RS-232)	
Connection to antenna	N-type, UBR84, UBR100, UBR140, UBR220 , UBR260, UBR320, Circular	
Management	SNMP traps, MIB, SNMP v1/v2c, Web GUI, Telnet, FTP/TFTP, Serial terminal	
Performance graphs	Rx level, Tx level, Radial MSE, LDPC decoder stress, Modem temperature, System temperature, PSU input voltage, PSU power consumption, constellation diagram, equalizer graph	
Ethernet switch	Managed Fast Ethernet Layer 2	
QoS	64 level DiffServ (DSCP) or 8 level 802.1p mapped in 4 prioritization queues with VLAN support	
VLAN support	802.1Q (up to 15 concurrent traffic VLANs)	
Spanning Tree	802.1D-2004 RSTP, 802.1Q-1998 STP	
Operational use	EN 300 019 Class 4.1, IP66, outdoor weather protected, 100% condensing	
Max. power consumption	19-33 W (SP); 19-45 W (HP)	

* Inquire SAF Tehnika representative for more information



hkaco.com



加关注